



Quick guide for Made for iPhone (MFi) functionality

Cochlear™ Baha® 5 Sound Processor

Benefits of using the MFi functionality in the Baha 5 Sound Processor

- **Stream music or audio** from apps directly to the sound processor(s)
- **Stream audio from incoming/outgoing calls or FaceTime calls** to the sound processor(s)
- **Control and adjust settings** on the sound processor(s) using an iPhone, iPad or iPod touch
- Use an iPhone, iPad or iPod touch as a **remote microphone**
- Access the functionality of the **Baha 5 Smart App**

Hardware supported

The Baha 5 Sound Processor supports MFi functionality with the following hardware from Apple: **iPhone 6 Plus, iPhone 6, iPhone 5s, iPhone 5c, iPhone 5, iPad Air 2, iPad Air, iPad (4th generation), iPad mini 3, iPad mini 2, iPad mini and iPod touch (5th generation)** using iOS 7.* or later.



Made for
 iPod iPhone iPad

Pairing and connecting the sound processor to a supported iPhone, iPad or iPod touch

1

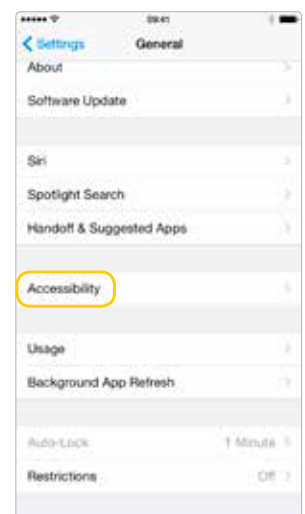
Turn on **Bluetooth** functionality on the iPhone, iPad or iPod touch.



2

Go to Settings > General > **Accessibility**.

Make sure the sound processor(s) are **turned off** (open the battery doors) at this point.



Quick guide for Made for iPhone (MFi) functionality

Cochlear™ Baha® 5 Sound Processor



3

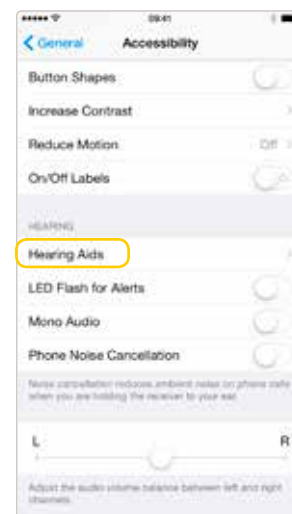
Turn the sound processor(s) **on** by closing the battery door(s).

Note: When pairing to two sound processors, turn them on simultaneously.



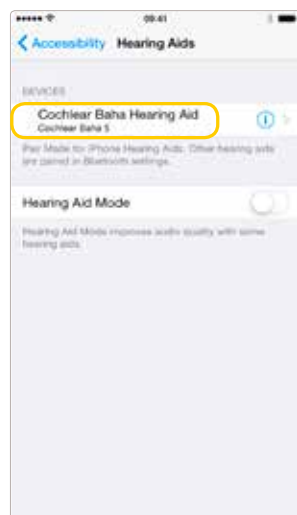
4

Select **Hearing Aids** in the **Accessibility** menu.



5

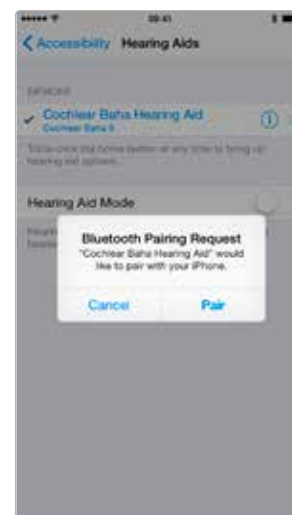
The name of the user along with the sound processor model will appear.



6

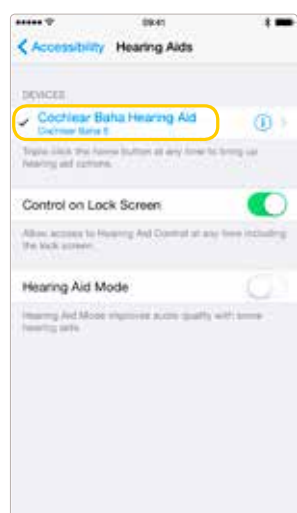
Tap on the name of the user/sound processor model. A pairing request will now appear. Press **"Pair"** to initiate the pairing process.

Note: When pairing two sound processors, there will be two separate pairing requests. Ensure that the two sound processors have been configured as a left and a right device.



7

The iPhone, iPad or iPod touch will now pair to the sound processor(s) and automatically connect to it. A series of **6 beep tones** will be heard, followed by a **ripple tone** approximately 20 seconds later (**or wait for 120 seconds** to be certain that the process has been completed).



Note: When pairing for the first time, the sequence also includes an MFi authentication process.

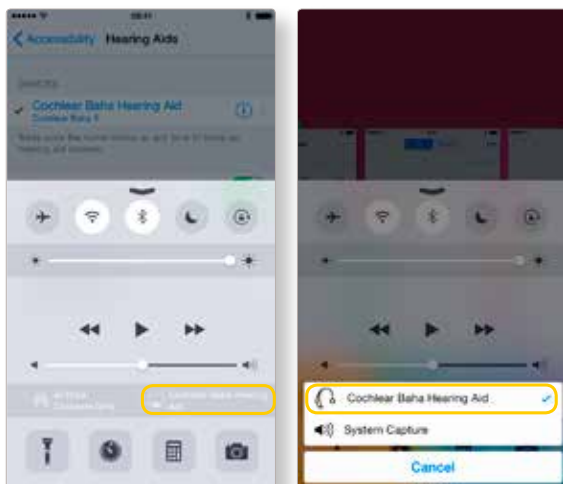
During the process of authentication **do not** start any streaming to the sound processor(s) after pressing the pairing request.



Quick guide for Made for iPhone (MFi) functionality

Cochlear™ Baha® 5 Sound Processor

Streaming directly from an iPhone, iPad or iPod touch to the sound processor(s)



When **playing music** with the media player or apps on the Apple device, you can stream directly to the connected Baha 5 Sound Processor(s). **Volume can be controlled by the slider or volume buttons** on the iPhone, iPad or iPod touch. If needed select the sound processor(s) as the source using **Airplay** and start streaming.



You can also **stream the audio of phone or FaceTime calls** to your sound processor(s). **Start streaming using the source selection** and when the call is completed, just end the call to return to normal sound processor operation.

Controlling the sound processor(s) directly from an iPhone, iPad or iPod touch

With the sound processor(s) connected, some features can be controlled directly from the iPhone, iPad or iPod touch — either by using the **Accessibility Shortcut** or via **Settings**.

Controlling via Accessibility Shortcut

Access the sound processor via the Accessibility Shortcut by a **triple-click of the home button**.

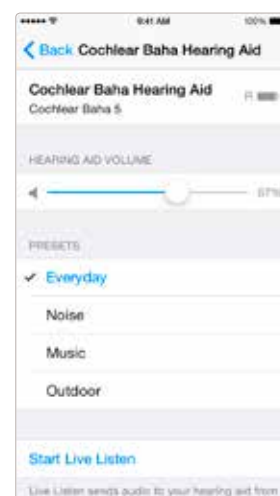
Once in this screen, key information can be seen, volume adjusted and program selected.

Live Listen can also be enabled which allows using the microphone of the iPhone, iPad or iPod touch to pick up sound and stream it directly to the sound processor(s).

OR

Controlling via Settings

Access the sound processor(s) via **Settings > General > Accessibility > Hearing Aids**. Tap on the name of the sound processor(s) to access more features.



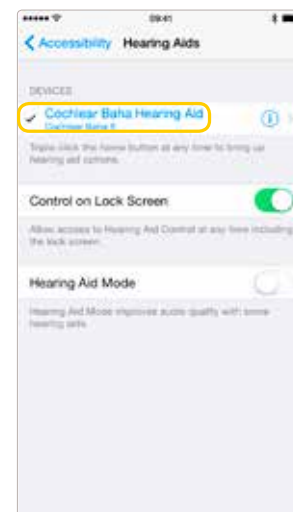


Quick guide for Made for iPhone (MFi) functionality

Cochlear™ Baha® 5 Sound Processor

Re-connecting to an iPhone, iPad or iPod touch

When turning off the sound processor (by opening the battery door) the device will be disconnected. To connect it again, turn on the sound processor (by closing the battery door). The sound processor will then automatically connect to the iPhone, iPad or iPod touch. The connection can also be verified by accessing the Accessibility shortcut (triple click the home button) to ensure the sound processor has been detected.



Pairing to more than one iPhone, iPad or iPod touch

Up to five different iPhone, iPad or iPod touch can be paired to a Baha 5 Sound Processor but only one at a time. When changing between the devices you need to disconnect from the currently connected iPhone, iPad or iPod touch by turning off Bluetooth on that device, and then turn on Bluetooth on the device you want to connect to.

Cochlear Baha 5 Smart App

The Baha 5 Smart* App can be **downloaded for free from the Apple App Store**. Enter the App Store by pressing the App Store icon and search for "Baha" and "smart".

QR code

Alternatively you can download the Baha 5 Smart App by scanning the QR code.



After finding the app, press the button that says "**Free**". The button will then say "**Install**". Press "**Install**" and enter your Apple ID password. After entering the password the Baha 5 Smart App will start downloading. If using an iPad change the "iPad only" search criteria in the top right corner to "iPhone only".



*The Cochlear Baha 5 Smart App is compatible with iPhone 6 Plus, iPhone 6, iPhone 5s, iPhone 5c, iPhone 5, iPad Air 2, iPad Air, iPad (4th generation), iPad mini 3, iPad mini 2, iPad mini and iPod touch (5th generation) using iOS 8.1 or later.

Support

For more information and support on Baha 5 Sound Processor and its Made for iPhone functionality, please contact your hearing care professional or refer to the Cochlear Baha 5 Sound Processor User Manual part A or visit the Cochlear website: www.cochlear.com

Manufacturer:

Cochlear Bone Anchored Solutions AB Konstruktionsvägen 14, 435 33 Mölnlycke, Sweden
Tel: +46 31 792 44 00 Fax: +46 31 792 46 95

www.cochlear.com

Ardium, Baha, Baha Divino, Baha Intenso, Baha SoftWear, BCDrive, DermaLock, Vistafix and WindShield are either trademarks or registered trademarks of Cochlear Bone Anchored Solutions AB. Cochlear, SmartSound, Hear now. And always and the elliptical logo are either trademarks or registered trademarks of Cochlear Limited. The Bluetooth word mark and logos are registered trademarks owned by Bluetooth SIG, Inc. and any use of such marks by Cochlear Limited is under license. Apple, the Apple logo, AirPlay, FaceTime, Live Listen, iPhone, iPad and iPod touch are trademarks of Apple Inc., registered in the U.S. and other countries. App Store is a service mark of Apple Inc. © Cochlear Bone Anchored Solutions AB 2015. All rights reserved. MAR15.

631062-00